

Dresden Fan

Introduction

There are an infinite number of Dresden Fan patterns. The following templates and instructions are for a three piece open center Dresden fan pattern. The finished block size is six inches using a quarter inch seam allowance. Laying out these blocks can be done in traditional fan layout, but I prefer a layout reminiscent of the trip around the world pattern. Using the trip around the world layout requires minimal quilt top markings, and the quilt can be machine quilted with ease using a walking foot. The combination of layout, minimal markings, and easier machine quilting makes this quilt a perfect candidate for quick gifts. The curves are done with hand applique, but since I machine quilt over the edge of all the curves, I do not use my most delicate, time consuming hand applique. This approach results in a very sturdy quilt that is intricate looking without the complexity.

I have included a quick overview of the instructions, as well as templates and fabric requirement charts. This should be enough information for an experienced quilter to make this quilt. All e-mail questions and comments are appreciated.

The quilt is shown as an overall design, but this design can be enhanced with borders. Although the following instructions describe methods for speedy construction using rotary cutting, machine piecing, machine quilting with some easy hand applique, this quilt is also a good candidate for hand piecing and hand quilting.

Finally, I offer this information freely for the reader's personal use only! I make no guarantee or promise of it's accuracy other than it worked for me. So proceed at your own personal discretion and risk. Be careful and have fun!

Dresden Fan

Overview

The finished block size is six inches. Each block consists of three patches and a background square. Using template A, the patches are cut from 5.25" strips of fabric. The background squares are 6.5" and can be from one or more fabrics. There should be some contrast between patches and the background. Directional fabrics require extra yardage.

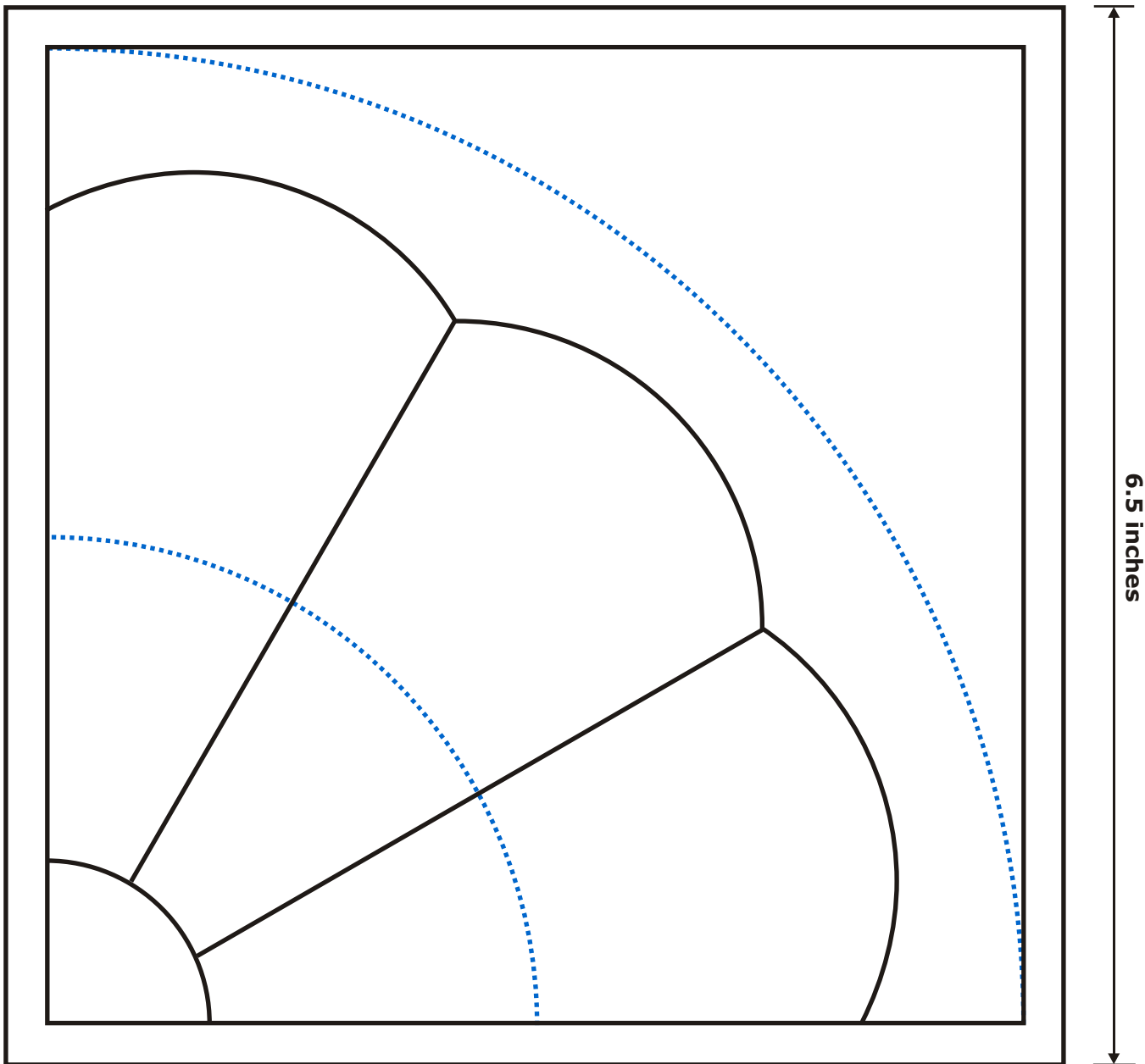
Sew sets of three patches together, forming triplets. Press the seams open. Mark the triplets with applique lines using a proper marking tool and template B, then trim within a quarter of an inch to the markings.

Placing the triplets on top of the background squares with right sides facing up, carefully align the straight edges, and pin or baste into place. Using the hand applique method of needle turning, use the needle to turn the fabric over the marked edge of the curve and stitch along the marked curves. If the quilt is to be machine quilted over the edges for durability, use the minimum number of stitches to create a smooth curve. Afterwards, if you choose you can clip the background fabric from behind the fan area, reducing bulk. I recommend removing the background fabric, especially if you intend to hand quilt.

The blocks are then ready to assemble into a quilt top. Lay out the blocks, and stack carefully. Sew first into rows, and then sew rows together to form the quilt top. After assembling the quilt top, use templates C and D, to mark each block with a proper marking tool. These two sets of lines along with the edges of the fans will form the guidelines to be used during machine quilting. Layer the quilt, using the backing and batting. Pin or thread baste the layers into place.

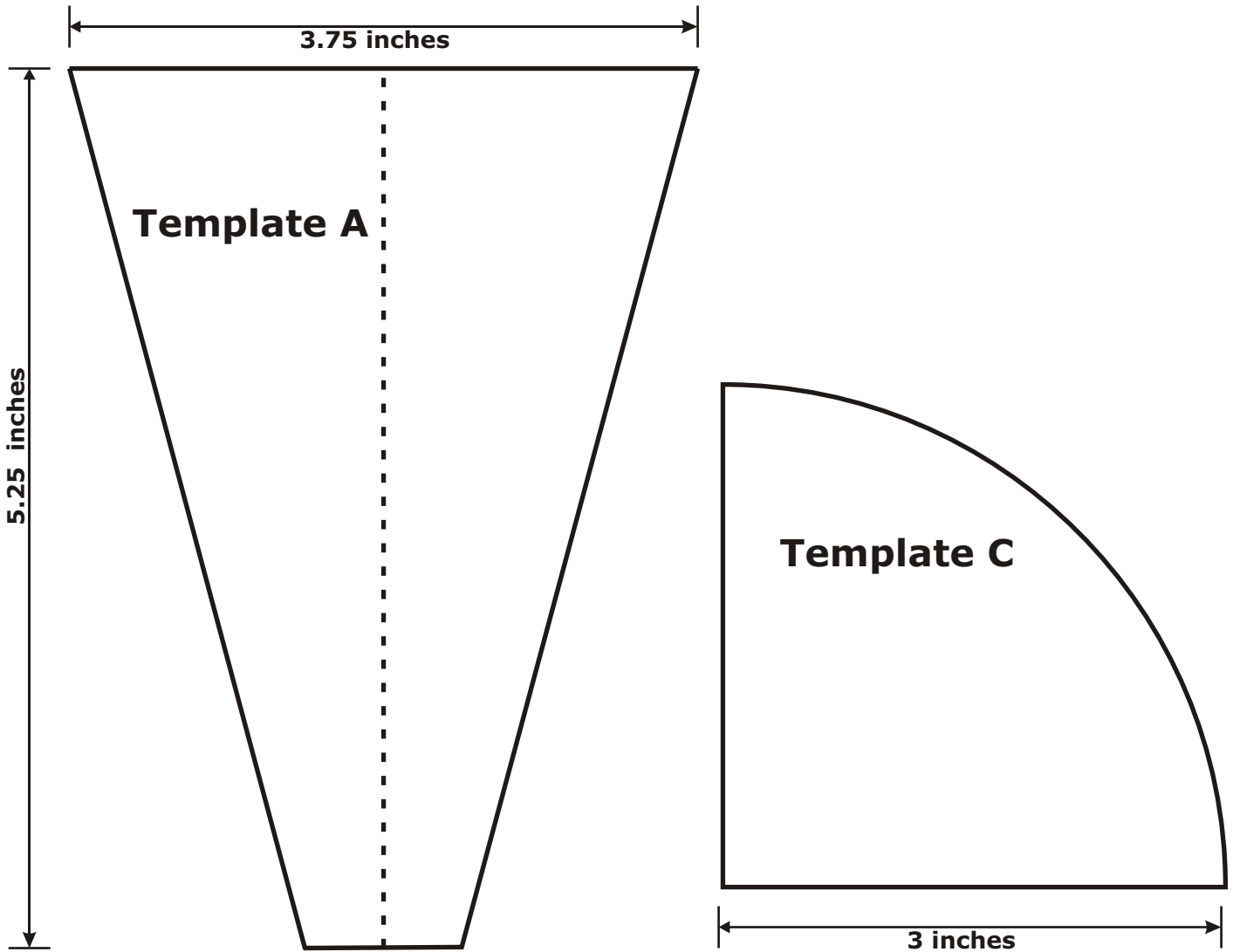
Starting in the center and working outwards, machine quilt along the marked lines, and along the edges of the fans. Keep echo stitching along those lines until you have quilted it enough to make it visually pleasing, and to satisfy the batting's minimum quilting requirements. Finish with a simple binding, and you have a durable yet fanciful quilt to be used and laundered with little fuss. Perfect as gifts to children,

Dresden Fan



This is a general layout of the dresden fan block. The dotted lines are suggested quilting lines to be marked. Individual templates are on the following pages. To ensure accuracy, check all the registration lines on your print out to make sure the printed version is true to size. When printing this pattern avoid any print options for shrinking or expanding to fit page size.

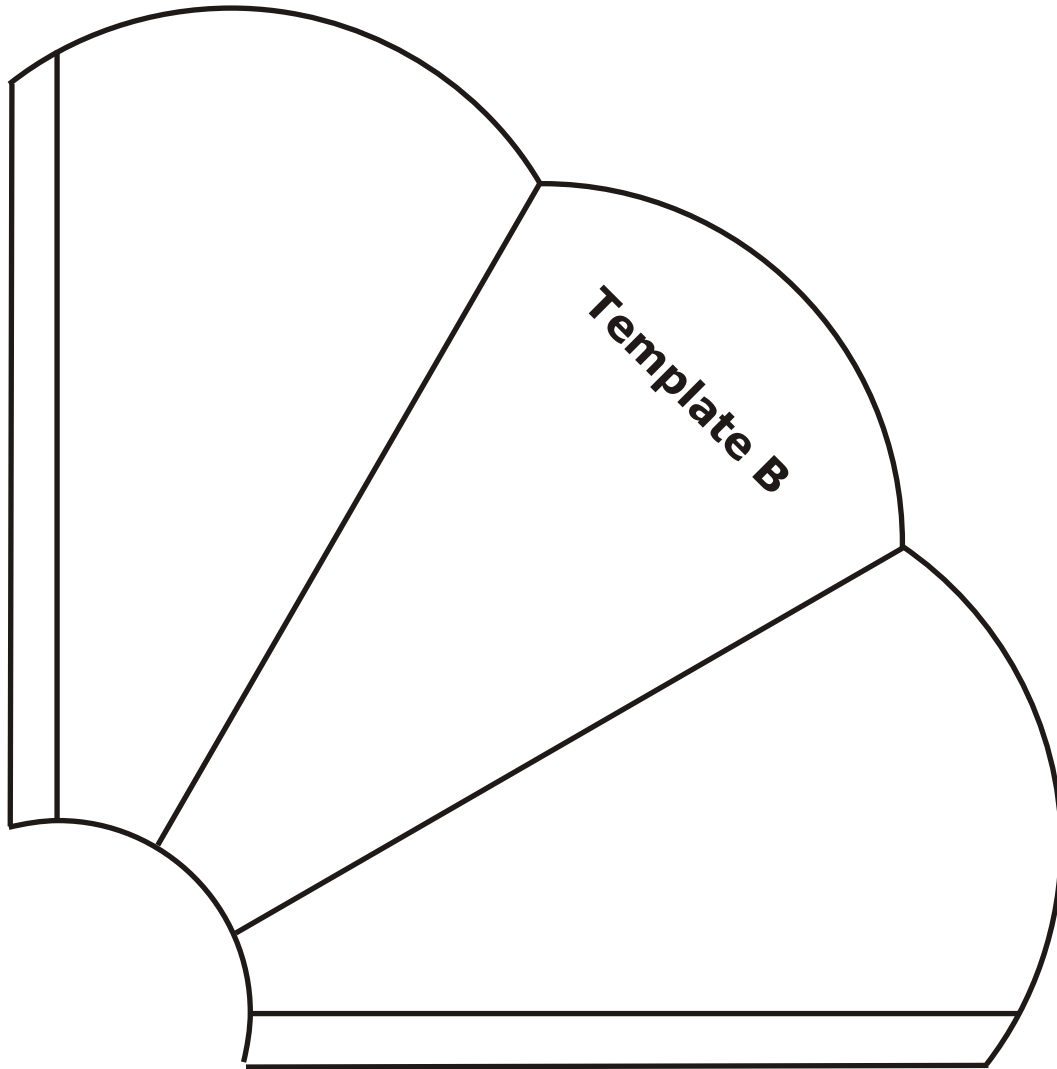
Dresden Fan



Template A is used for cutting patches used for fan blades. Template C is used for marking the quilting lines after quilt top is assembled. Be sure to check registration lines for accuracy.

Three-piece Open Center Dresden Fan			
	Finished Size (inches)	Number of Blocks	Number of Patches
Baby Blanket	36 x 36	36	108
Lap Quilt	60 x 72	120	360
Queen	96 x 96	256	768

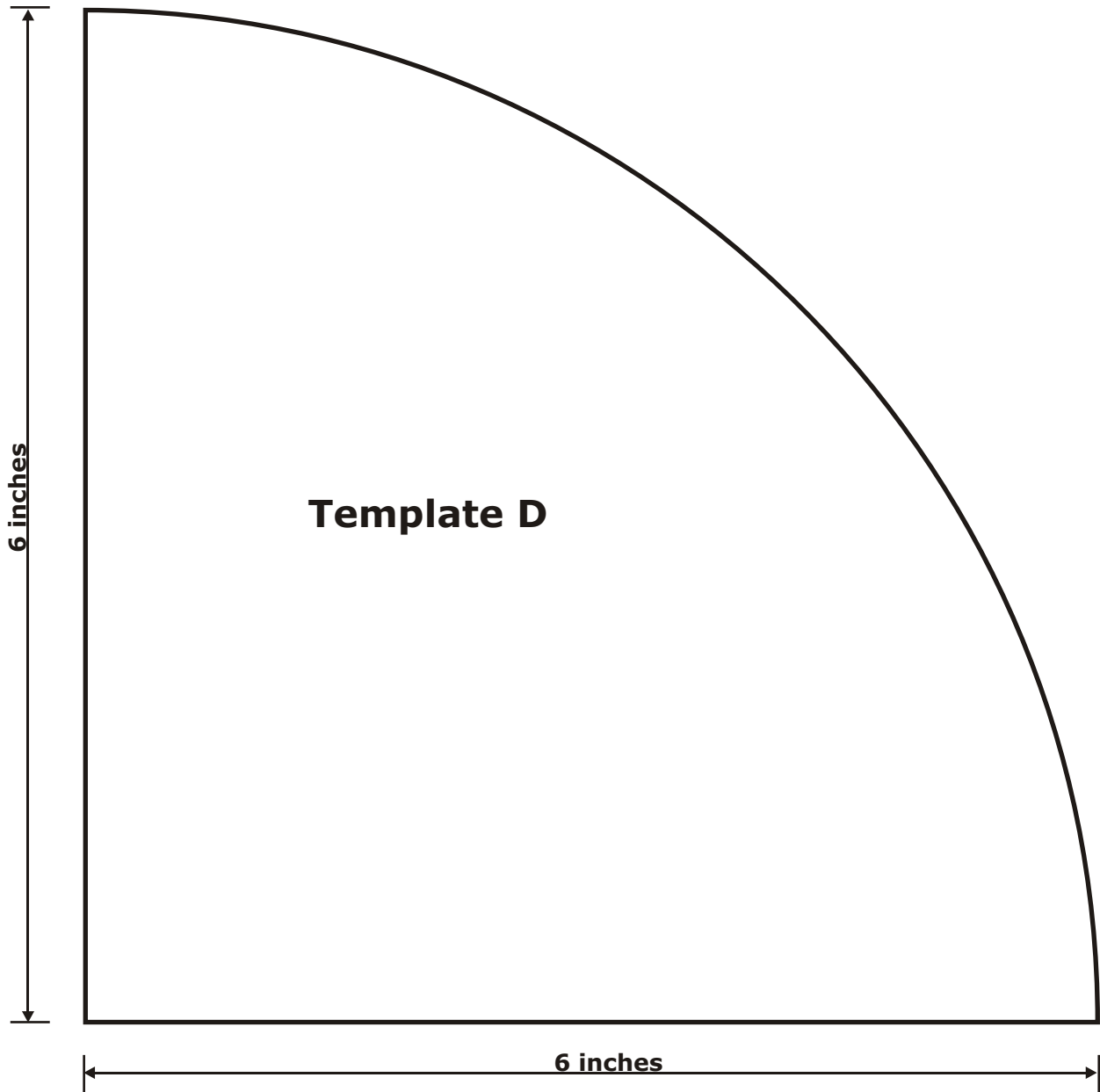
Dresden Fan



Template B is used to mark the applique lines on the triplets formed from sewing three patches together.

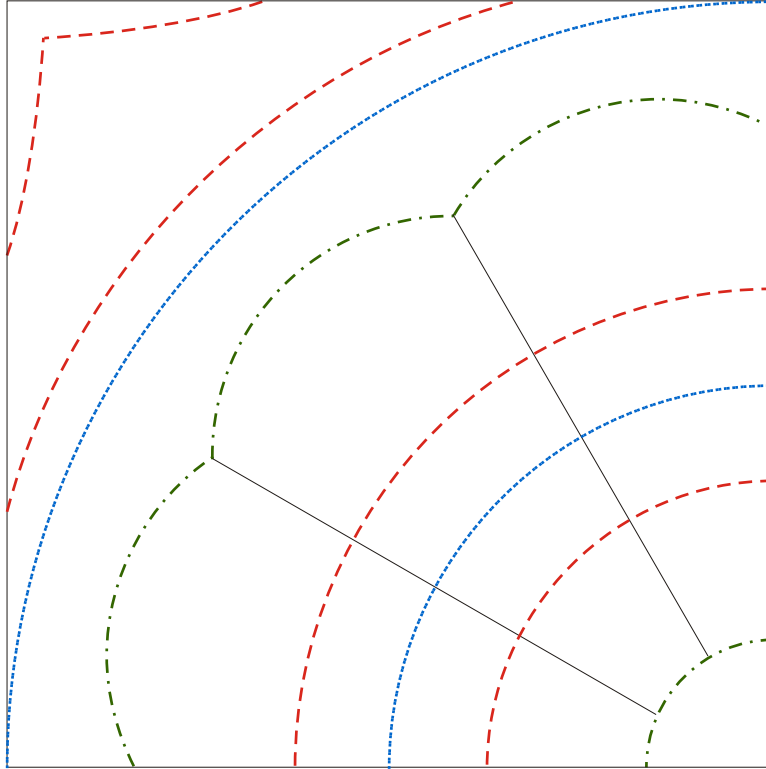
Three-piece Open Center Dresden Fan - Fabric Requirements					
	Patches				Background
	Fat 1/8	Fat 1/4	1/3 Yard	1/2 Yard	Yards
Baby Blanket	10	5	4	3	1.25
Lap Quilt	30	16	12	8	3.75
Queen	64	33	24	16	8
Additional fabric needed for backing and binding.					

Dresden Fan



Template D is used to mark one of two suggested quilting lines after the quilt top is assembled. Check registration lines for accuracy before making your own templates.

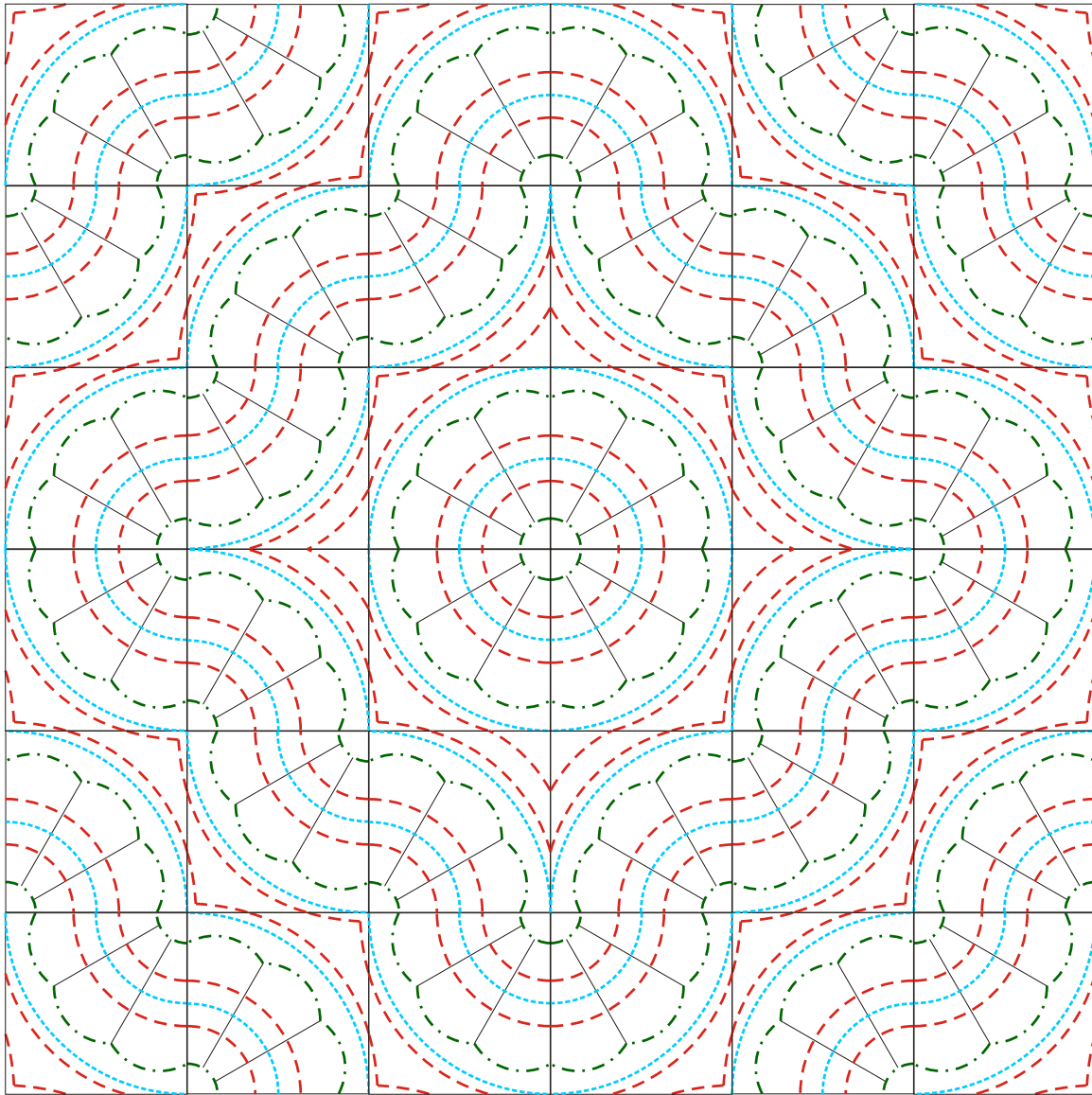
Dresden Fan



This is the block with the quilting lines. By using two marked lines, the edges of the fan, and adding some echo quilting, the block is quilted easily. For non-color printers the line types vary. This block is not drawn to scale it is simply provided as a guide for quilting.

- Red lines are some suggested echo quilting lines.**
- Blue lines are the marked quilting lines.**
- Green lines indicate quilting done on top of applique.**

Dresden Fan



This is the quilt top with the suggested quilting lines to give an idea of the overall effect. This machine quilting can be done with walking foot. I used a variegated thread which really added an extra sparkle to the quilting.